



---

**7<sup>th</sup> TRANSANATOLIA RALLY RAID**

**20<sup>th</sup> August – 27<sup>th</sup> August 2016**

**Organised by**

**Transanatolia Spor Organizasyonları Ltd. Şti.**

**Authorized by**

**TOSFED (Turkish Automobile Sports Federation)**

<b>CONTENTS</b>	<b>Page</b>
<b>1. Introduction</b>	<b>3</b>
<b>2. Organisation</b>	<b>4</b>
<b>3. Program</b>	<b>5</b>
<b>4. Registration</b>	<b>7</b>
<b>5. Insurance</b>	<b>12</b>
<b>6. Advertising and Identification</b>	<b>13</b>
<b>7. Administrative Control</b>	<b>15</b>
<b>8. Scrutineering</b>	<b>15</b>
<b>9. Competition Procedures</b>	<b>20</b>
<b>10. Penalties</b>	<b>27</b>
<b>11. Prizes</b>	<b>28</b>
<b>12. Final Scrutineering - Protests</b>	<b>30</b>
<b>Appendices</b>	
<b>Appendix I – ITINERARY</b>	<b>31</b>
<b>Appendix II – WINNER’S HONOUR BOARD</b>	<b>32</b>

## **1- INTRODUCTION**

### **1.1 Regulations**

The TransAnatolia Rally Raid is an individual event. The sporting regulations of this rally is unique and this rally does not count on any championship or cup.

Modifications, amendments and/or changes to these Regulations will be announced only by numbered and dated bulletins issued by the Organiser or the Stewards.

Additional information will be published on web site on 1<sup>st</sup> July 2016. The final itinerary will be published in the Road Book.

These regulations are published in English. In case of any dispute concerning the interpretation, English text will be binding.

### **1.2 Road Surface**

TransAnatolia Rally Raid is an Off Road competition. Road surface is variable as soft sand, salt flats, mud, grass, gravel and crater rocks.

### **1.3 Overall SS and Total Distance**

Additional information will be published on 1<sup>st</sup> July 2016

## 2 – ORGANISATION

### 2.1 ASN

Turkish Automobile Sports Federation (TOSFED)  
A Göksuevleri, Kartopu Caddesi No: B168/A, 34820  
Anadoluhisari, İstanbul – TURKEY  
T +90 (216) 465 11 55-56  
F +90 (216) 465 11 57  
W [www.tosfed.org.tr](http://www.tosfed.org.tr)

### 2.2 Organiser

Transanatolia Spor Organizasyonları Ltd. Şti.  
A Göksu Evleri, Ihlamur Cad. Göztepe Mah. A17/A Villa 65  
Anadoluhisari İstanbul - TURKEY  
T +90 (216) 465 13 22  
F +90 (216) 465 03 26  
E [info@transanatolia.com](mailto:info@transanatolia.com)  
W [www.transanatolia.com](http://www.transanatolia.com)

### 2.3 Organisation Committee

Operational Director	Mr. Burak Büyükpınar	TUR
Sporting Director	Mr. Mehmet Becce	TUR
Competitor Relations Director	Mr. Sönke Bonde	DEU
Competitor Relations Officer	Ms. Armağan Şahin	TUR
Administrative Officer	Mrs. Elif Tanca	TUR
Medical Team Coordinator	Mr. Prof. Dr. Mehmet Özdoğan	TUR
Rescue Team Coordinator	Mr. Zati Vatansever	TUR
Time Control Officer	Mr. M. Murat Cingiz	TUR
Media Officer	Mr. Gökhan Başiplikçi	TUR
PR Officer	Mrs. Serpil Çubukçu	TUR
Logistics/ Biouvac Officer	Mr.	TUR
GPS/Satellite Tracking Officer	Mr. Oğuz Çetinel	TUR
Boutique Officer	Mrs. Bade Oral Çelen	TUR

### 2.4 Race Officials

TOSFED Observer	TOSFED	TUR
Scrutineering Official	TOSFED	TUR
Head of the Stewards	Mr. Ersun Büyükpınar	TUR
Steward	Mr. M Şafak Doğan	TUR
Steward	Mr. Sertaç TATAR	TUR

## **3 – PROGRAM**

### **3.1 Schedule BEFORE THE RALLY**

To be announced on 1<sup>st</sup> July 2016

### **3.2 Schedule of the RALLY WEEK**

To be announced on 1<sup>st</sup> July 2016

## OPENING and CLOSING TIMES of CHECK POINTS / PROGRAM

All CP points will open 1 hour earlier than the first vehicle's ideal start time and will close 1 hour later than the last vehicle's ideal time. These times will be calculated according to the final itinerary and start list.

---

### **3.3 Rally HQ Working Hours and Locations:**

To be announced on 1<sup>st</sup> July 2016

### **3.4 Media Center Working Hours and Locations:**

To be announced on 1<sup>st</sup> July 2016

## 4 – REGISTRATION

### 4.1 Closing Date for Registration

31th July 2016

### 4.2 Registration Procedure

Sportsmen who would like to participate in TransAnatolia Rally Raid are obliged to fill the form at [www.transanatolia.com](http://www.transanatolia.com) completely including driver, co-driver and vehicle details. Registration forms and letters of commitment send to the Organiser must be signed by the sportsmen by latest the Administrative Check.

If the registration have been submitted by sending a fax or e-mail, the signed original registration form must be delivered to the Organiser by latest during the Administrative Check or send to the following address:

Transanatolia Spor Organizasyonları Ltd. Şti.

A Göksu Evleri, Ihlamur Cad. Göztepe Mah. A17/A Villa 65  
Anadoluhisarı İstanbul - TURKEY

T +90 (216) 465 13 22

F +90 (216) 465 03 26

E [info@transanatolia.com](mailto:info@transanatolia.com)

W [www.transanatolia.com](http://www.transanatolia.com)

Entries will only be accepted if the total amount of entry fee is transferred.  
The Organiser reserves the right to accept/reject registrations.

All drivers must have an international valid driver license and national racing license, except raid entrants who will not drive the vehicle during the rally.

### **4.3 Number of Entrants Accepted**

**4.3.1** The maximum number of entries is limited to 120.

In case of more than 120 entrants, the Organiser reserves the right to accept/reject registrations and the decision to be announced thereby will be decisive.

**4.3.2** Designation of competition numbers

**4.3.2.1** The first digit of competition numbers shall be designated according to the following order:

Bikes	001-099
Quads	101-199
SSV's	201-299
Cars	301-399
Trucks	401-499

**4.3.2.2** The second and third digit of competition numbers shall be designed according the following order:

- 1) Finishing positions in previous TransAnatolia Rally Raids
- 2) Finishing positions in pre-run season Rally Raid's
- 3) National Champions in Cross Country Races



### 4.3.3 Permitted Vehicles

#### Categories

---

**Rally** Time Based Competition

*Denotes the Category in which ranking is made according to the total time of Special Stages and penalties.*

**Raid** Navigation Based Competition

*Denotes the Category in which ranking is made according to the Navigation Success and penalties.*

#### Group & Classes for Rally and Raid Categories

---

**Group B**      **Bikes**

Class B1      Up to 450cc

Class B2      450cc+

**Group C**      **Cars**

Class C1      4x4 Cars with petrol engine

Class C2      4x4 Cars with diesel engine

Class C3      4x2 Cars with petrol engine

Class C4      4x2 Cars with diesel engine

Class C5      Cars with alternative energy systems

**Group Q**      **Quads**

Class Q1      4x2 Quads

Class Q2      4x4 Quads

**Group S**      **SSV's**

Class S1      Up to 1050cc

Class S2      1050cc+

**Group T**      **Trucks**

Class T1      Trucks

## 4.4 Registration Fees & Packages

### 4.4.1 With Optional Organiser's Advertisements

#### Regular Registration Fees

Categories	Rally	Raid
Bikes & Quads	2.750 EUR	2.500 EUR
Cars, Buggies & SSV's	3.950 EUR	3.700 EUR
Trucks with two drivers	4.300 EUR	4.050 EUR
Service Truck (incl. Driver)	1200 EUR	1200 EUR
Add. Mechanic or Guest	750 EUR	750 EUR

#### Registrations before 30.04.2016

Categories	Rally	Raid
Bikes & Quads	2.500 EUR	2.250 EUR
Cars, Buggies & SSV's	3.750 EUR	3.500 EUR
Trucks with two drivers	4.000 EUR	3.750 EUR
Service Truck (incl. Driver)	1200 EUR	1200 EUR
Add. Mechanic or Guest	750 EUR	750 EUR

#### Registrations before 28.02.2016

Categories	Rally	Raid
Bikes & Quads	2.250 EUR	2.000 EUR
Cars, Buggies & SSV's	3.550 EUR	3.300 EUR
Trucks with two drivers	3.700 EUR	3.450 EUR
Service Truck (incl. Driver)	1200 EUR	1200 EUR
Add. Mechanic or Guest	750 EUR	750 EUR

#### 4.4.2 Rejecting Optional Organiser's Advertisements

For competitors who refuse the advertisements offered by the Organiser shall pay 50% more registration fee and other fees.

#### 4.4.3 Registration Package

Accommodation	Conditions
Hotel 20 August, 22 August, 27 August	<ul style="list-style-type: none"><li>• 4 nights accommodation is included.</li><li>• Breakfast are included.</li><li>• Rooms are double and triple Pls. ask for single accommodation conditions if available.</li><li>• All other expenses are excluded.</li></ul>
Bivouac 21 August, 23 August, 24 August, 25 August, 26 August	<ul style="list-style-type: none"><li>• Teams will stay in their own tents.</li><li>• Breakfast, dinner and soft drinks (during the breakfast and during the dinner).</li></ul>

Items	Conditions
Fuel	<ul style="list-style-type: none"><li>• Not Included</li></ul>
Road Book	<ul style="list-style-type: none"><li>• Included</li></ul>
Maps	<ul style="list-style-type: none"><li>• Not Included</li></ul>
Satellite Tracking System	<ul style="list-style-type: none"><li>• Included (deposited)</li></ul>

#### 4.5 Payment Conditions

18% VAT + Rally Civil Liability Insurance are included.

Registration fees should be paid to the following bank accounts:

EUR Account

BANK : Yapı Kredi Bankası  
BRANCH : Göktürk İstanbul (Branch Code: 767)  
NAME : Transanatolia Spor Organizasyonları Ltd. Şti.  
SWIFT CODE : YAPITRIS  
IBAN CODE : TR79 0006 7010 0000 0090 5255 75

TRL Account

BANK : Yapı Kredi Bankası  
BRANCH : Göktürk İstanbul (Branch Code: 767)  
NAME : Transanatolia Spor Organizasyonları Ltd. Şti.  
SWIFT CODE : YAPITRIS  
IBAN CODE : TR53 0006 7010 0000 0090 4591 13

- The name of the competitor has to be noted on the remarks field during payment without fail.
- Registration fees must be completely paid prior to the registration closing date. Registrations with incomplete payment will be rejected.
- VAT included to the registration fee is obliged to be paid.
- Cheques are not accepted.

#### **4.6 Cancellation Policy**

The Organisation will return the entry fee with 30% (of the entrance fee) deduction by cancellation demand of competitor. Competitors have the right to postpone the registration fee to be used for the next event without any deduction. For this term the entry fee should be paid completely.

#### **4.7 Refunds**

Registration fees shall be refunded under the following conditions:

- In case the entry has not been accepted
- In case of the rally will not take place other than a force major situation
- In case of postponement entry fee will not be refunded and the competitor will be given the right to compete in the first event going to be held.

## **5 – INSURANCE**

### **5.1 Traffic Insurance**

In accordance with the Turkish Law, the participants are required to have Road Traffic Insurance.

Entrants going to participate with the cars carrying a foreign registration plate should have a valid Road Traffic Insurance in compliance with the Turkish laws in effect.

All entrants are required to document their insurances during the Administrative Control.

### **5.2 Civil Liability Insurance of the Rally**

Civil liability insurance against third parties, within the purview of the Turkish Republic's laws, is included to the registration fees.

Liability of the insurance will begin at the start of the rally and will cover only the Special Stages and the Super Special Stage and will terminate at the end of the rally or in case of abandoning the race.

On the liaisons (roads except the special stages) the insurances of race cars are valid and Organiser bears no responsibilities.

### **5.3 Limitation of Indemnity**

Organiser does not accept any responsibility incident to any consequences of frauds committed by the competitors that violate the rally conditions, rules or laws of the country. Neither shuttle vehicles and/or scout vehicles used by the competitors, nor vehicles with special plates given by the Organiser are accepted as the official participants of the rally. As such, they are not covered within the rally insurance policy and they take all the risks that may occur in their own responsibilities.

## 6 – ADVERTISING & IDENTIFICATION

### 6.1 Restrictions

Tobacco, other smoking products and alcoholic beverages advertising is prohibited in Turkey. This law applies to competing and service cars, equipment and clothing.

### 6.2 Organiser's Compulsory Advertising

6.2.1 Organiser's advertising on the vehicles are:

- Official rally plate
- Competition numbers

### 6.2.2 Organiser's Optional Advertising

Bike 20cm x 15cm on front, left and right body panels

Quad 20cm x 15cm on front, left and right body panels

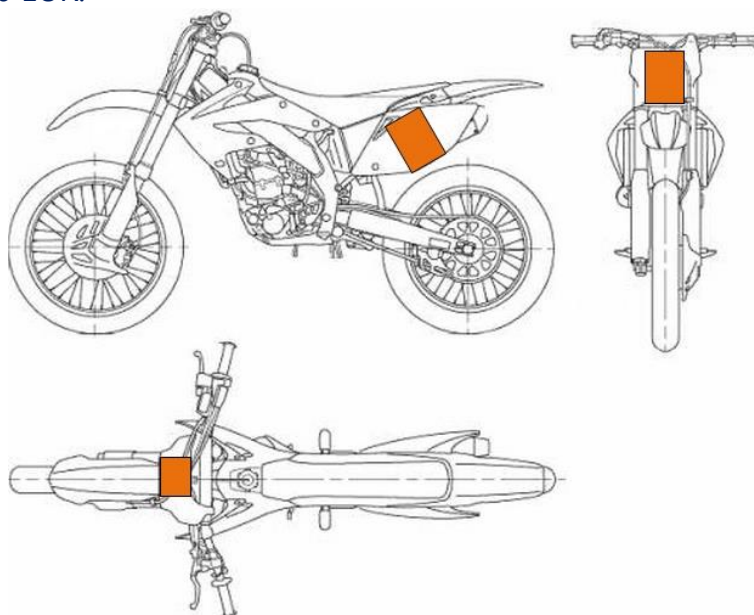
SSV 20cm x 15cm on front, left and right body panels

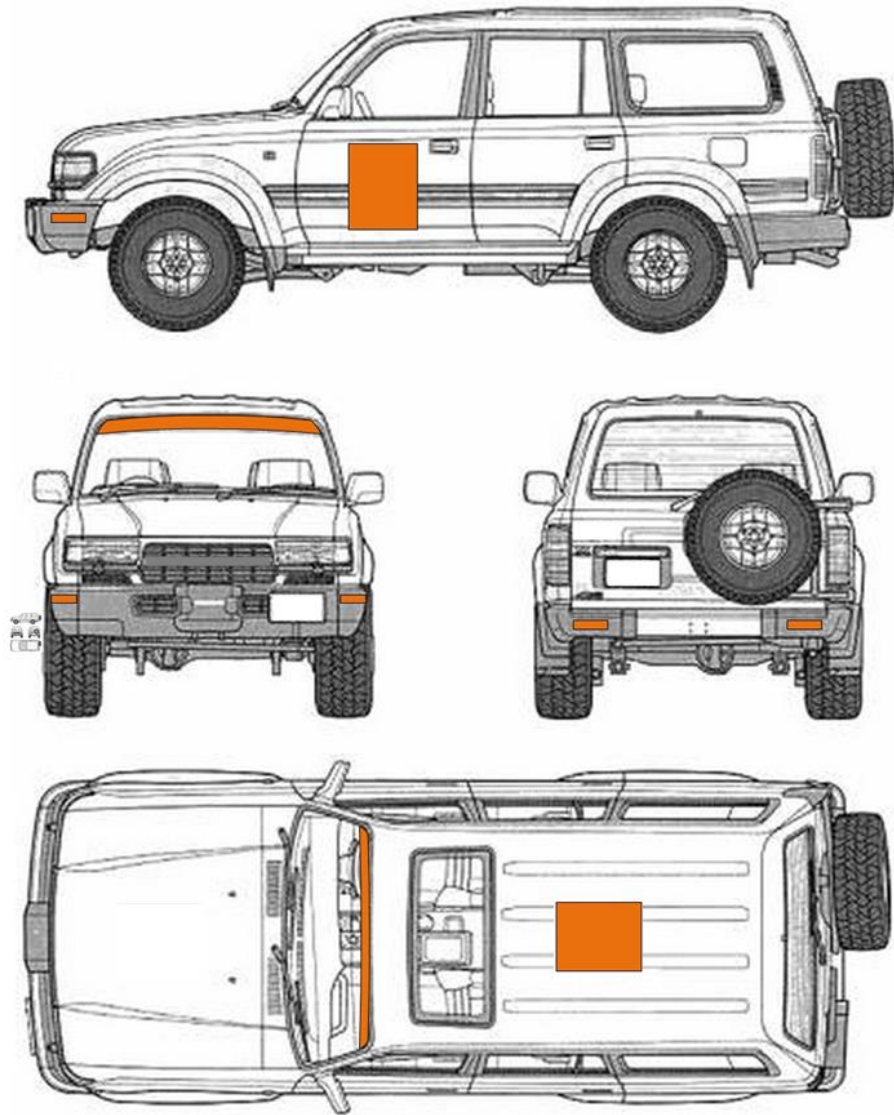
Car 40cm x 50cm on left and right, top body panels

Truck 40cm x 50cm on left and right, top body panels

Please see the terms of Rejecting Organiser's Optional Advertising (4.4.2)

Remember that Organiser will supply only one spare for each advertisement sticker. For each sticker you lose or apply incorrectly you will be subjected to a penalty of 300 EUR.





### 6.3 Identification

Race number, rally plates and advertisement stickers are provided by the organiser. They must be adhered to the rally cars before the rally car enters to the technical inspection and should be visible during the rally.

### 6.4 Sanctions, applied for violation of any rule incident to number plates and identification, are as follows

Missing single Rally Plate or Competition Number	cash penalty of 100 EUR
Missing Competition Numbers or Rally Plates at the same time	disqualification
Invisible Rally Plates or License Plates	cash penalty of 100 EUR
Not presence of Organiser's Optional Advertisements	
at any time for each incorrectly placed advertisement	cash penalty of 300 EUR
Not presence of one or more driver's name at any time	cash penalty of 100 EUR

## **7 – ADMINISTRATIVE CHECK**

### **7.1 Documents to be submitted**

- Drivers and co-driver's driving licenses
- Drivers and co-driver's national racing licenses except raid entrants
- All details in the registration form must be completed
- Third party traffic insurance
- Documents and registration papers and plates

These documents have to be submitted before the vehicles are called to the scrutineering.

## **8 – SCRUTINEERING**

### **8.1 Team**

Any crew taking part in the rally, or their representative, duly designated in writing must arrive to the scrutineering and present the vehicle in accordance with the timetable hereinafter.

Scrutineering will be carried out according the individual time Schedule to be announced by a Bulletin and scrutineering timecard.

### **8.2 Engine**

All modifications are allowed that comply with the safety requirements.

### **8.2 Roll-Cage & Roll-Bars**

Roll-Cage is obligatory in Rally Categories for Cars and Trucks.  
Roll-Cage is suggested in Raid Categories for Cars and Trucks.

### **8.3 Chassis**

All modifications are allowed that comply with the safety requirements for bikes, Quads, SSV's, Cars and Trucks.



#### **8.4 Gearbox & Transmission**

All modifications are allowed that comply with the safety requirements

#### **8.5 Overfed Engines (Engines with Turbo, Supercharge or similar systems)**

All modifications are allowed that comply with the safety requirements.

#### **8.6 Fuel**

Vehicles should use standard fuel available in the filling stations. If the vehicle has any aftermarket fuel system installation like LPG, the tank of aftermarket system should be removed. Tank removal is not needed for vehicles with the factory installed alternative energy technologies. All competitors may only refuel in refuelling zones or in gas stations at any time. The vehicles which are using the engines of alternative energy types (Cars in C5 Class) should transfer the fuel or energy source by themselves to the refuelling zones separately.

#### **8.7 Suspension**

All modifications are allowed that comply with the safety requirements.

#### **8.8 Tires**

Any type of tires including airless tires or mousse tires are accepted.

#### **8.9 Mud Flaps**

Mud Flaps are obligatory in Rally Categories for SSV, Cars and Trucks.  
Mud Flaps are suggested in Raid Categories for SSV, Cars and Trucks.

#### **8.10 Window Nets**

The use of door nets are obligatory for SSV and Buggy Categories.

#### **8.11 Lights**

Head lamps, turn lights, tail lights, brake lights, warning lights of the vehicle must work properly. The number of fog and driving lights are unlimited.

## 8.12 Required Safety Equipments

The competitors have to meet all the requirements stated in the following table during the scrutineering.

### Requirements and Suggestions for Cars, SSV's & Trucks

SSV's, Cars & Trucks	Rally	Raid
Roll Cage	Required	Suggested
Bucket Seats	Required	Suggested
Safety Belts	min. 4-points belts are required, 6-points quick release belts suggested	Standard belts are accepted, 4-points belts are suggested
Helmet	Required (Helmets must be fulfill the safety standards)	Suggested. If the vehicle has a Roll Cage then Helmets are Required (Helmets must be fulfill the safety standards)
Hans	Suggested	Suggested
Navigation	Garmin GPS with Mini USB port required (please ask for upload systems)	GPS with Mini USB port required (please ask for upload systems)
	Tripmaster suggested	Tripmaster suggested
Fuel Range / Tank Capacity	min. 300 km range required	min. 300 km range required
Recovery Winch	Optional	Optional
Tires	Any type of tires accepted	Any type of tires accepted
Ropes	Syntetic Strechy Rope (min. 5m) Capacity = 2x Vehicle Weight	Syntetic Strechy Rope (min. 5m) Capacity = 2x Vehicle Weight
	Tow Rope (min. 6m) Capacity = 2x Vehicle Weight	Tow Rope (min. 6m) Capacity = 2x Vehicle Weight
	Cord for General Usage (min. 20m length and Ø10mm)	Cord for General Usage (min. 20m length and Ø10mm)
	2 Eyebolts or Soft Schackles required	2 Eyebolts or Soft Schackles required

Spare Tires	1 Spare Tires required 2 Spare Tires suggested.	1 Spare Tires required 2 Spare Tires suggested.
Tow Points	2 tow points (front and rear)	2 tow points (front and rear)
Fire Extinguisher	Allowed Fire Extinguisher Types AFFF min. 2.4Kg x 2 FX G-TEC min. 2.0Kg x 2 Viro3 min.2.0Kg x 2 Powder min 2.0 Kg x 2	Allowed Fire Extinguisher Types AFFF min. 2.4Kg x 2 FX G-TEC min. 2.0Kg x 2 Viro3 min.2.0Kg x 2 Powder min 2.0 Kg x 2
Mobile Phone	Required	Required
Satellite Phone	Suggested	Suggested
Emergency Blankets	2 Emergency Blankets required	Suggested
First Aid Kit	Large size of first aid kits are required	Large size of first aid kits are required
Camel Bag	Suggested	Suggested
Maps	Late editions of Turkey Maps suggested	Late editions of Turkey Maps suggested

## Requirements and Suggestions for Bikes & Quads

Bikes	Rally	Raid
Helmet	Required (Helmets must be fulfill the safety standards)	Required (Helmets must be fulfill the safety standards)
Neck Brace	Suggested	Suggested
Navigation	Garmin GPS with Mini USB port required (please ask for upload systems)	Garmin GPS with Mini USB port required (please ask for upload systems)
	Tripmaster suggested	Tripmaster suggested
Fuel Range / Tank Capacity	min. 180 km range required	min. 180 km range required
Tires	Any type of tires accepted	Any type of tires accepted
Mobile Phone	Required	Required
Satellite Phone	Suggested	Suggested
Emergency Blankets	1 Emergency Blankets required	Suggested
First Aid Kit	Medium size of first aid kits are required	Medium size of first aid kits are required
Camel Bag	Holder and pipe for 2lt of drinking water per person required	Holder and pipe for 2lt of drinking water per person required
Maps	Late editions of Turkey maps suggested	Late editions of Turkey maps suggested

### 8.13 Noise Level

The maximum permitted noise level is 103 dBA. Vehicles not complying with this rule will not be allowed to start. The noise will be measured during scrutineering, with a sonometer, placed at an angle of 45° to and a distance of 50 cm from the exhaust outlet, with the vehicle's engine running at 3500 rpm.

### 8.14 Other regulations

- a. Vehicles must be presented to the scrutineers with the rally plates, competition numbers and advertising.

Crews arriving late at scrutineering shall be fined as follows:

Up to 30 minutes	30 EUR
From 30 minutes to 1 hour	50 EUR
For every additional hour	20 EUR

- b. First Aid Kit and Triangles

A first aid kit, a flashlight and 1 reflecting triangle are to be used as a warning for following cars in the event of road blockages, therefore obligatory for vehicles in SSV, Buggy, Car and Truck Categories.

- Infringements may be subject to the refusal of start.
- Vehicles in the SSV, Buggy, Car and Truck Categories must carry a red reflective triangle which, in the event of the car stopping in a special stage, must be placed in a conspicuous position by a member of the crew at least 50 metres before the car's position, in order to warn following drivers/riders.
- Any crew failing to comply may be subject to a penalty at the discretion of the stewards. This triangle must be placed even if the stopped car is off the road.

- c. Two-way Radio Communication

The approved GSM (mobile) telephones are exempted from licensing. For every other radio system, competitors should apply to the relevant authority in Turkey.

Any infringement of the law will render the brochurers liable for legal procedures and if their frequencies interfere with the Organisation network, immediate sanctions will be requested.

### 8.15 Spare parts

Number of spare parts and replacements are unlimited. The official service trucks of the teams are allowed to provide service to vehicles everywhere. Service Trucks are responsible to choose safe places for maintenance and repair works.

## **9 – COMPETITION PROCEDURE**

Despite all the efforts to provide closed stages with the help of governmental authorities TransAnatolia Rally Raid is an open race off road event. That, competitors should be aware of the fact that they may encounter other vehicles with in the special stages.

### **9.1 Rally Start Procedure**

In case a Pre-Start Holding Area in a Super Special Stage location (please see Article 3-Program) team members are allowed to drive their vehicles to the Pre-Start Holding Area. Each competitor should enter their vehicle to the holding area 30 minutes before the first vehicle's start time.

The teams that arrive late to the Pre-Start Holding Area will be given the following penalties:

Up to 10 minutes	50 EUR
From 10 minutes to 30 minutes	100 EUR

Taking part in Super Special Stage is obligatory. However, the time set at this stage is not included in the general ranking. It will be awarded by the special cup. Teams that cannot start due to force majeure should inform the situation in writing and must pay a penalty of 200 EUR.

### **9.2 Rally Finish Procedure**

Rally Finish CP will be defined on Itinerary. Subsequently the competitors are required to comply with the instructions of the officials in order to go to the Finish ramp and enter the Parc-Ferme.

### **9.3 Liasons (Normal Stages)**

Liasons are the transfer stages between bivouacs and special stages or in between Special Stages. A specific time is given to pass these stages. Competitors should proceed according to the time indicated in the itinerary. In case of early arrival 2 minutes and in case of late arrival 1 minute penalty for each minute will be applied.

Competitors who checked in CP before the closing time of that Control Point will be allowed to start.

Competitors who were unable to start the special stage should proceed to the next CP safely. Their time will be set as the worst special stage time +30 minutes.

The route given in the road book should be followed for safety reasons. Approval from the person in charge of the stage or race director should be obtained in case of deviation from the rally route due the acceptable reasons. Otherwise, penalty will be applied if deviation from the rally route is determined by the satellite tracking system (Pls. see 10)

The time Control Points (CP) are defined with the following signage.



CP Area Enter



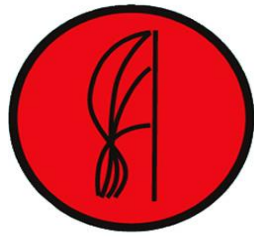
CP Point

## 9.4 Special Stages

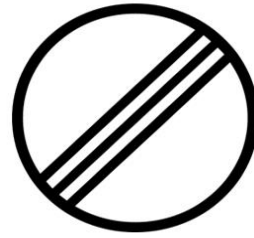
Special Stages are the parts of the rally route which the vehicles in the Rally Category competes against the time.

### 9.4.1 Special Stage Start Procedure

- a. The competitors should give their time card to the marshall at CP Desk exactly on time.
- b. Marshalls on the CP Desk will add 3 minutes for Special Stage start.
- c. The Competitor should place the vehicle to the start point with all safety equipments ready (safety belts, helmets, satellite tracking working, GPS on e.t.c).
- d. Special Stage Start equipments will be on the right side of the road, about 1-3 meters ahead of the start line.
- e. A dot will turn to yellow 1 minute before start.
- f. First lights will turn to red 30 seconds before start.
- g. Red lights will turn on 5 seconds before start one by one.
- h. Start time is exactly when all 5 lights are turned off.
- i. For false start a penalty will be applied (Pls. see 10).
- j. According to the rankings first 10 vehicles of each category will start with 2 minutes interval instead of 1 minute for other competitors.



SS Start Point



SS Start Area End

### 9.4.2 Timing of the Special Stage

Time will be measured with sensitivity of the one-tenth of a second at the special stages. The Rally's official time is the GPS based time to be seen in the special stage start system.

### 9.4.3 Special Stage Finish Procedure

The special stage finish time will be determined according to the Flying Finish method without stopping using photocells. As clearly shown in the Road books, the table with yellow flag will be found at least 300 m before the stop point, 100 m later with a red flag the finish point will be passed without stopping; after 200 m competitor should stop at Stop point and finish time will be noted to the time card.

This process should be completed in the possible shortest time and should be out of the the protected referee control area. The special finish areas are defined with the following signage.

Competitors will be given a time for the next liaison on Stop points.



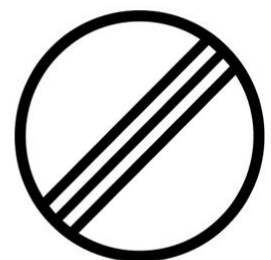
100 m to FF line  
End



FF line



Stop Point



Finish Area

### 9.4.4 Re-fueling Zone in a Special Stage

In some special stages there may be re-fueling zones denoted in the road book. In these 15 minute neutralization zones re-fueling can be carried out under the super vision of marshalls. Competitors fail to complete re-fueling with in 15 minute interval will be given 1 minute time penalty for every additional minute.

## **9.5 Limited Speed Zones**

Speed restriction will be applied in village transitions or areas with heavy traffic within the liaisons or special stages. The areas where speed restriction will be applied are clearly shown in the Road Book.

In limited speed zones external speed control will be carried out without notice. In addition, by the end of the day GPS tracks of selected competitors will be checked with sampling method and their speeds in these areas will be identified. Penalties shall be applied if there is no permission in the controlled GPS Data or if it is missing or if there is violation of speed restriction (Pls. see 10).

## **9.6 Way Points**

Competitors must follow the way points from scrutineering exit to the finish. Way points will be uploaded daily to competitors GPS's. The competitors have to drive via these way points. For missed way points time penalty will be applied (Pls. see 10).

## **9.7 Special Stages that are not Passed for Rally Categories**

Each special stage has opening and closing hours. If a competitor could not reach within these hours to the time control point, the competitor should proceed to the next CP this could be start of the next stage or bivouac or hotel. Competitors leaving the route should inform race officials immediately.

## **9.8 Classification for Raid Category**

Evaluation of the vehicles compete in this category will be done considering the success of navigation and time will not be kept at the special stages. Entrants competing in this category should run in accordance with the traffic rules especially the speed limitations. Infringement of speed limit in limited speed zones or in public roads will be penalized.

The competitor will be liable for the usage of their GPS devices including the settings and they should supply requested data to the Organisation.

GPS settings and way points are available in the road book will be uploaded to the devices daily. First upload will be in the scrutineering.

The Organiser will determine "special tasks" as defined below and classification will be made according to the results of these stages.



Daily Ranking Points:

1. 10 Points
2. 8 Points
3. 6 Points
4. 5 Points
5. 4 Points
6. 3 Points
7. 2 Points
8. 1 Point

### **9.8.1 Special Task Stages**

Following Road Book: Some of the stages in the race course will be followed according to the road book which has detailed definitions. Ranking will be made at the end of the day according to the result that will be obtained by comparing the GPS tracks of the vehicles with the original stage track. Shorter or longer tracks will cause loss of points. Competitors should run the stage following the road book without considering the time. Competitors are responsible for providing the track. Tracks recorded incompletely due to running out of battery or GPS shut down will not be included on the evaluation.

Target Finding: In those stages competitors will be asked to stop following the road book on a certain point of the stage and reach the points that are previously uploaded to GPS devices with the help of GPS and maps. Usage of GPS may be sufficient to reach those points but maps and navigation apps for mobile devices (phone tablet) are allowed and suggested.

Special Skills Stages: In those stages competitors may be given tasks which will prove their special skills. Evaluation of these tasks will be carried out by officials or all of the raid competitors together. Points scored in those stages will be added to general classification. Those tasks will be announced with bulletins or with the help of officials when a competitor reaches a certain point.

### **9.8.2 Equipments**

Competitors are advised to try and learn usage of devices and applications referred below.

GPS: Garmin is the official supporter of the event therefore usage of Garmin devices with mini USB port is obligatory. Installation of a detailed map is advised.

Tripmaster: According to this document usage of tripmaster is not mandatory but suggested as it will be the biggest supporter of competitors in the stages where road book is followed. (Suggested Brand: Terratrip)

Useful Navigation Devices and Applications: Usage of mobile devices (phone and tablet) and applications are allowed and suggested in target finding stages to find the way. (Recommended Applications: MotionX GPS Ranger View)

## **9.9 Driving Conduct**

During the Rally all of the competitors have to comply with speed restrictions according to the national traffic rules and areas for that speed restrictions shown in the road book.

Infringements will be penalized by board of stewards as below:

Each traffic infringement	250 EUR
The first speed restriction violation	10 minutes time penalty
The second speed restriction violation	30 minutes time penalty
The third speed restriction violation	disqualification

## **9.10 Accident Reporting**

If one of the team is involved in an accident causing physical injury to one of the people around, the related driver or co-driver must remain at the accident place stop the following competitor and provide information. This vehicle should report the situation to the next radio point specified in the road book.

Emergency Phone Numbers will be provided on the back side of the competitor card.

## **9.11 SOS/OK Procedure**

Organiser will give to competitors colored prints of "SOS/OK" signs. The standard of this paper is 80 gr A3. On one side of this paper is red "SOS" sign and on the other side green "OK" sign.

In the event of an accident emergency medical help is needed, competitor must press the "SOS" button on the tracking device then the red "SOS" sign should be displayed as soon as possible to the following vehicles or helicopters. Any competitor who saw the red "SOS" sign or the significant accident have immediately and without exception to stop for help.

All other following vehicles have to stop. The second car came to the accident place should inform the next radio point. The road should be kept open for the next and emergency vehicles. The appropriate time will be provided according to the Stewards decision to all competitors stopped by this procedure.

If in the event of an accident or mechanical failure the medical intervention is not required, competitor must press "OK" button on the tracking device and then should clearly show to the following vehicles the green "OK" sign. The teams violate the above-mentioned rules will be reported to the Race Director. The team is impounded from the Rally, except the compelling reason, should inform the organizers as soon as possible.

Rally Control follows each competitor with satellite tracking. Be sure that your GPS tracking system works properly and check the batteries before every special stage. Please inform the rally control as soon as possible if you have only mechanical failure and medical help is unnecessary.



Satellite Tracking Device

## 10 – PENALTIES

### 10.1 Fines

10.1.1	For each sticker you lose or apply incorrectly	300 EUR
10.1.2	Missing single Rally Plate or Competition Number	100 EUR
10.1.3	Invisible Rally Plates or License Plates	100 EUR
10.1.4	Not presence of Organiser's Optional Advertisements at any time for each incorrectly placed advertisement	300 EUR
10.1.5	Not presence of one ore more driver's name at any time	100 EUR
10.1.6	Late Arrival to the Scrutineering	Up to 30 minutes delay 30 EUR From 30 minutes up to 1 hour 50 EUR Per additional hour 20 EUR
10.1.7	Late Arrival to the Pre-Start parking	Up to 10 minutes delay 50 EUR From 10 minutes up to 30 minutes 100 EUR Special Audience Stage Start Failure 200 EUR
10.1.8	Each traffic infringement	250 EUR
10.1.9	Missing Helmet or Safety Belt in Special Stage, first time	100 EUR
10.1.10	Missing Helmet or Safety Belt in Special Stage, second time	200 EUR

### 10.2 Time Penalties

10.2.1	Deviation from the route without notification, first & second time	30 minutes
10.2.2	Fault Start, first time	1 minute
10.2.3	Fault Start, second time	3 minutes
10.2.4	Fault Start, third and more time	10 minutes
10.2.5	Violation to restricted speed zones, first time	10 minutes
10.2.6	Violation to restricted speed zones, second time	30 minutes
10.2.7	Missing GPS Track for speed zone control, first & second time	30 minutes
10.2.8	Missing Way Point Pass	10 minutes
10.2.9	Early checkin to CP (for each minute)	2 minutes
10.2.10	Late checkin to CP (for each minute)	1 minute
10.2.11	Late departure from re-fueling zone (for each minute)	1 minute
10.2.12	Special Stage that are not passed	Worst time* of the category + 30 minutes If the difference between the last vehicle time and the previous vehicle's time (in the same category) is unexpected, Board of Stewards could cancel the last vehicles time and set the time for this vehicle against the rule 10.2.11 too.

### 10.3 Disqualification penalties

10.3.1	Missing Competition Numbers or Rally Plates at the same time	disqualification
10.3.2	The third speed restriction violation	disqualification
10.3.3	Deviation from the route without notification, third time	disqualification
10.3.4	Violation to restricted speed zones, third time	disqualification
10.3.5	Missing GPS Track for speed zone control, third time	disqualification
10.3.6	Missing Helmet or Safety Belt in Special Stage, third time	disqualification

## 11 – PRIZES

### 11.1 Prize-giving

The prize-giving ceremony will take place at Samsun

### 11.2 Prizes

#### General Classification of the Rally

Winner	of Bikes	in Rally Category	Cup
Second	of Bikes	in Rally Category	Cup
Third	of Bikes	in Rally Category	Cup

Winner	of Bikes	in Raid Category	Cup
Second	of Bikes	in Raid Category	Cup
Third	of Bikes	in Raid Category	Cup

1st of Class B1	Medalion/Plaquet
1st of Class B2	Medalion/Plaquet

---

Winner	of Quads	in Rally Category	Cup
Second	of Quads	in Rally Category	Cup
Third	of Quads	in Rally Category	Cup

Winner	of Quads	in Raid Category	Cup
Second	of Quads	in Raid Category	Cup
Third	of Quads	in Raid Category	Cup

---

Winner	of SSV's	in Rally Category	Cup
Second	of SSV's	in Rally Category	Cup
Third	of SSV's	in Rally Category	Cup

Winner	of SSV's	in Raid Category	Cup
Second	of SSV's	in Raid Category	Cup
Third	of SSV's	in Raid Category	Cup

1st of Class S1	Medalion/Plaquet
1st of Class S2	Medalion/Plaquet

---

Winner of Cars in Rally Category Cup  
Second of Cars in Rally Category Cup  
Third of Cars in Rally Category Cup

Winner of Cars in Raid Category Cup  
Second of Cars in Raid Category Cup  
Third of Cars in Raid Category Cup

1st of Class C1 Medalion/Plaquet  
1st of Class C2 Medalion/Plaquet  
1st of Class C3 Medalion/Plaquet  
1st of Class C4 Medalion/Plaquet  
1st of Class C5 Medalion/Plaquet

---

Winner of Trucks in Rally Category Cup  
Second of Trucks in Rally Category Cup  
Third of Trucks in Rally Category Cup

Winner of Trucks in Raid Category Cup  
Second of Trucks in Raid Category Cup  
Third of Trucks in Raid Category Cup

---

Best Woman Rider Cup  
Best Woman Driver Cup

Centilmen competitor Kemal Merkit Cup

## **12 – FINAL SCRUTINEERING - PROTESTS**

### **12.1 Date & Times**

Please refer to Article 3 – Program.

### **12.2 Protest fees**

Amount of the protest fee is 500 EUR

If the protest requires the dismantling and the reassembly of the different parts of a car, the claimant must pay an additional deposit :

For a protest involving a clearly defined part of the car (engine, transmission, steering, braking system, electrical installation, bodywork)

The expenses incurred by the work and by the transport of the car shall be borne by the claimant if the protest is unfounded, or by the competitor against whom the protest is lodged if it is upheld.

If the protest is unfound and if the expenses incurred by the protest (scrutineering, transport, etc.) are higher than the amount of the deposit, the difference shall be borne by the claimant. Conversely, if the expenses are less, the difference shall be returned to them.

### **11.3 Appeal fees**

This rally is not count on any championship. Therefore there is no appeal fee defined.

## **13 – FORCE MAJEURE**

Organiser shall not be liable for any delay or failure to perform any obligation under this regulation insofar as the performance of such obligation is prevented by an event beyond their reasonable control, including but not limited to, war, warlike conditions, blockade, embargoes, riots, governmental restriction, labor disturbances, unavailability of anticipated usual means of supplies, transportation or loading facilities, wrecks, epidemics, quarantine, fire, flood, earthquake, explosion, any unforeseen change in circumstances, or any other causes beyond its reasonable control.

If Organiser becomes aware that any circumstances constituting Force Majeure have arisen, it shall immediately announce it in the written form.

## **14 – DISPUTES**

This regulation, and any dispute or claim arising out of or in connection with it or its subject matter shall be governed by and construed in accordance with the laws of the Republic of Turkey. The courts and directorate of execution of Istanbul (Caglayan) shall have exclusive jurisdiction to settle any dispute or claim that arises out of or in connection with this regulation.



## APPENDIX II – WINNER’S HONOUR BOARD

2015

---

Bike	Gerrard Farres Guell	ESP	KTM 450
SSV	Tsanko Tsankov - Zornitsa Todorova	BGR	Polaris RZR 1000
Car	Suat İnan – Ejder Erişti	TUR	Mitsubishi Pajero
Truck	Marino Mutti – Andrea Mazzoleni	ITA	Mercedes Unimog

2014

---

Bike	Alessandro Botturi	ITA	Husqvarna 450
SSV	Tsanko Tsankov - Zornitsa Todorova	BGR	Polaris RZR
Car	Ahmet Tinkır – Ali Günpay	TUR	Jeep CJ8
Truck	Marino Mutti – Roberto Zambelli	ITA	Mercedes Unimog

2013

---

Bike	Paolo Ceci	ITA	Yamaha WR 450
Quad	Zornitsa Todorova	BGR	Yamaha Raptor 700R SE
Car	Ahmet Tinkır – Suat İnan	TUR	Mitsubishi Pajero 3.5 V6
Truck	Marino Mutti-Michael Wolff	ITA	Mercedes Unimog

2012

---

Bike	Mirco Miotto	ITA	Honda CRF 450
Quad	Sarel Van Biljon	ZAF	E.-ATV Racing Extreme
Car	Mehmet Becce – Turgut Barış	TUR	Suzuki Jimny

2011

---

Bike	Alex van Ginkel	NED	KTM 450 EXC
Quad	Alex Brusselers	NED	E.-ATV Racing Extreme
Buggy	Jacob van den Outenaar - Joey van den Outenaar	NED	Predator X18
Car	John Richard Heijde - Richard van de Schoot	NED	Toyota Land Cruiser KZJ90

2010

---

Bike	Kemal Merkit	TUR	KTM 690R
Quad	Dieter Cottyn	BEL	Yamaha 450
Car	Jos de Jongh - Luc Schrauwen	BEL	Toyota Land Cruiser HDJ80